

# POLYSCREEN®



Bs2d0  
Class 1 - Pass



GREENGUARD  
GOLD



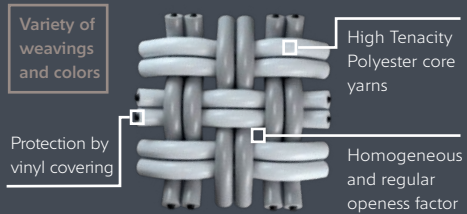
IMO

**POLYSCREEN® 365**



**BANDALUX**

# BANDALUX POLYSCREEN® 365



## FUSIÓN ENTRE ESTÉTICA, EFICACIA TÉRMICA Y CONFORT VISUAL

- Excelente protección térmica gestión de hasta el 91% de energía solar (Gtoti = 0.23).
- Visibilidad exterior y eficiencia térmica: 5% de apertura homogénea.
- Rendimiento energético: contribuye al ahorro energético en calefacción y aire acondicionado.
- Filtrado de la luz muy eficaz: 95% de la luz bloqueada (TV=5%).
- Tejido sostenible, respetuoso con la salud y el medio ambiente, 100% reciclable.
- Calidad del aire: inoloro, no desprende COV (certificado Greenguard Gold).
- Enrolle perfecto incluso para grandes dimensiones (ancho 250-300 cm).
- Resistencia a condiciones meteorológicas extremas (IMO) y al cloro.

## ALLIANCE D'ESTHÉTIQUE, D'EFFICACITÉ THERMIQUE ET DE CONFORT VISUEL

- Protection thermique renforcée : jusqu'à 91 % de l'énergie solaire maîtrisée (Gtoti = 0.23).
- Visibilité extérieure et efficacité thermique : 5 % d'ouverture homogène.
- Performances énergétiques : contribue aux économies de chauffage et de climatisation.
- Filtre efficacement la lumière : 95 % de la lumière stoppée (TV = 5 %).
- Tissu éco-conçu, respectueux de la santé et de l'environnement, 100 % recyclable.
- Qualité de l'air : sans odeur, il ne dégage pas de COV (certifié Greengard Gold).
- Excellent enroulement même en grandes dimensions (largeur 250 cm).
- Résiste aux conditions météorologiques en milieux les plus extrêmes (IMO), résistance au chlore.

## THE IDEAL FUSION OF AESTHETICS, THERMAL EFFICIENCY AND VISUAL COMFORT

- Excellent thermal protection, managing up 91% of solar heat (both indoors and outdoors: (Gtoti = 0.23).
- Visibility to the outside and thermal efficiency: 5% degree of opening, throughout the entire shade.
- Energy efficiency: contributes to energy savings in heating and air conditioning.
- Highly efficient sunlight filter: 95% of the light is blocked (TV = 5%).
- A sustainable, 100% recyclable, environmentally friendly and health-friendly fabric.
- Air quality: colorless, VOC emission free (Greenguard Gold certified).
- Perfect roll, even in large sizes (250-300 cm in width).
- Resistant to extreme climate conditions (IMO) and chlorine.

## FUSIONE TRA ESTETICA, EFFICIENZA THERMICA E CONFORT VISIVO

- Eccellente protezione termica, gestione fino al 91% di energia solare (Gtoti = 0.23).
- Visibilità esterna ed efficienza termica: 5% di apertura omogenea.
- Rendimento energetico: contribuisce al risparmio energetico nel riscaldamento e nell'aria condizionata.
- Filtraggio della luce molto efficace: 95% della luce bloccata (TV =5%).
- Tessuto sostenibile, rispettoso della salute e dell'ambiente, 100% riciclabile.
- Qualità dell'aria: inodore, non rilascia COV (certificato Greenguard Gold).
- Avvolgimento perfetto anche per grandi dimensioni (larghezza 250-300 cm).
- Resistenza a condizioni meteorologiche estreme (IMO) e al cloro.

### PROPERTIES



### MAINTENANCE



### CERTIFICATES

#### FABRICS CERTIFICATES



#### COMPANY & SYSTEMS CERTIFICATES

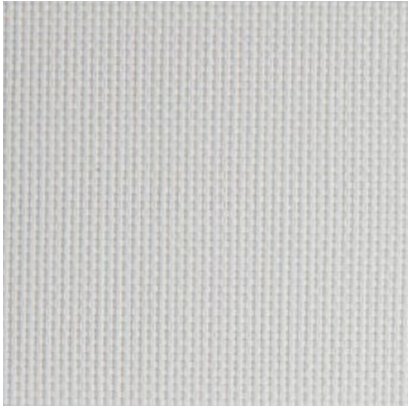


Contributing to Ecofriendly Building

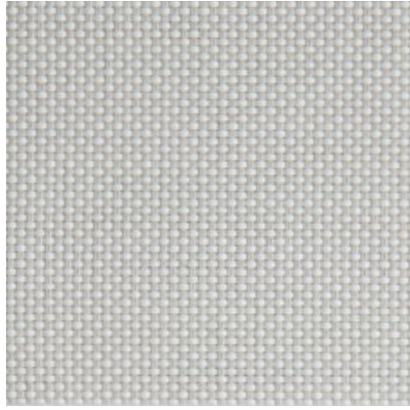


FIND MORE AT — [contract.bandalux.com](http://contract.bandalux.com)

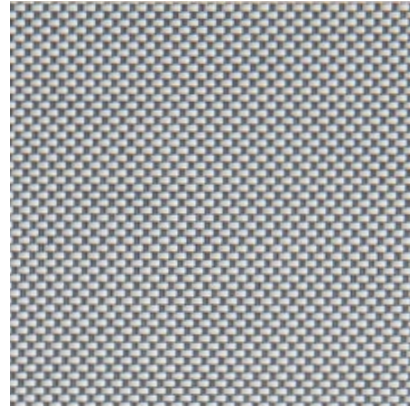




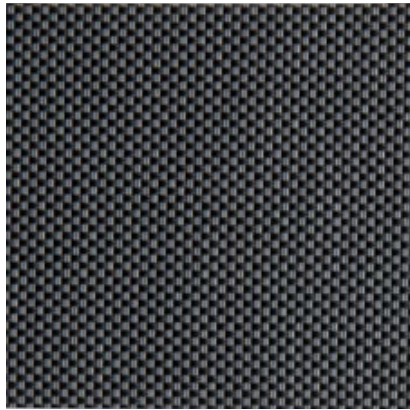
**White**  
Ref. 19902



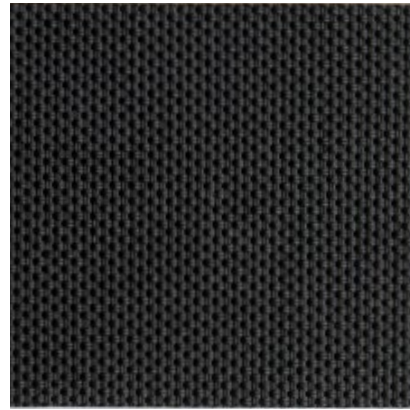
**White Pearl**  
Ref. 19927



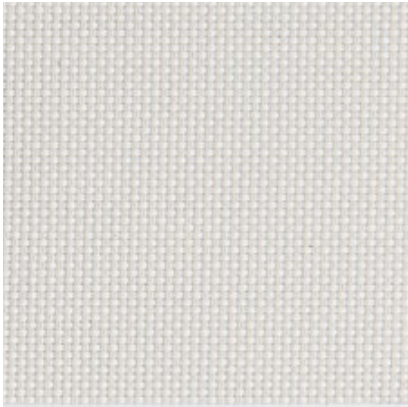
**White Grey**  
Ref. 19921



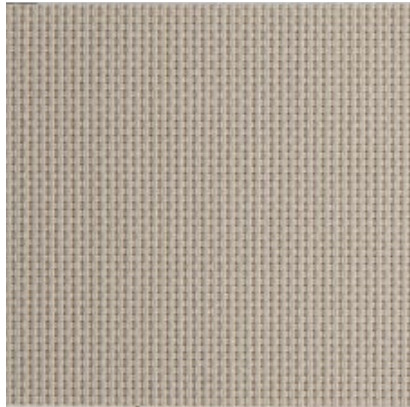
**Ebony Grey**  
Ref. 19955



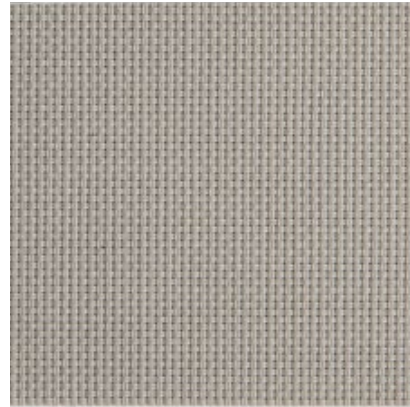
**Ebony**  
Ref. 19980



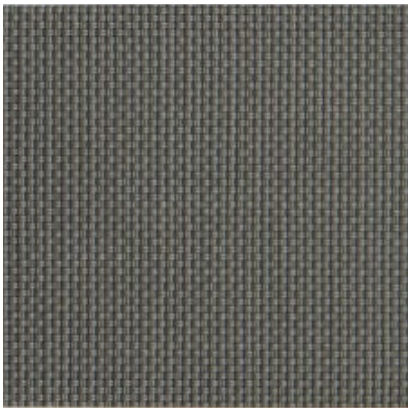
**White Linen**  
Ref. 19920



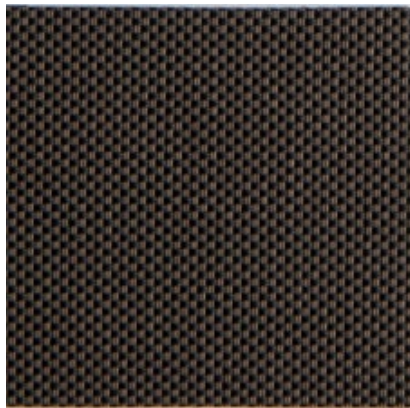
**Cinder**  
Ref. 19958



**Pebble**  
Ref. 19959



**Slate**  
Ref. 19850



**Ebony Chocolate**  
Ref. 19900



**Ebony Bronze**  
Ref. 19904

OF 5%

**POLYSCREEN® 365**

**BANDALUX**

## TECHNICAL DATA

Composición / Composition / Composition / Composizione	-	80% PVC + 20% PES
Peso / Poids / Weight / Peso	EN 12127	447 g/m <sup>2</sup> - 13,95 oz/yd <sup>2</sup>
Espesor / Épaisseur / Thickness / Spessore	EN ISO 5084	0,62 mm - 0,024"
Ancho de rollo / Largeur rouleau Roll width / Larghezza del tessuto	-	250 cm - 98"
Grado de apertura / Coefficient d'ouverture Openess Factor / Grado di apertura (%)	-	5%
Resistencia al fuego / Classement feu Fire classification / Resistenza al fuoco	EN 13501-1 EN 13773 NFPA 701 - CAN/ULC-S109-3	Bs2d0 Class 1 Pass
Wheelmark	IMO Res.MSC.307(88)-(2010 FTP Code) IMO MSC/Circ. 1102	Pass
Resistencia al desgarro / Résistance à la déchirure Tear resistance / Resistenza alla trazione (daN)	EN ISO 13937-3	5,3 daN - 3,7 daN
Resistencia a la ruptura / Résistance rupture Tensile strength / Resistenza alla rottura (daN/5cm)	EN ISO 13934-1	175 daN - 111 daN
Resistencia a la luz / Résistance à la lumière Light Fastness / Resistenza alla luce (Grey Scale)	EN ISO 4892-2 (exterior)	5/5 4/5 White
Resistencia a la luz / Résistance à la lumière Light Fastness / Resistenza alla luce (Blue Scale)	EN ISO 105 B02 (interior)	8/8 7/8 White
Test de olores / Test d'odeur / Odour test / Test degli odori	PV-3900	3 Pass
Resistencia en ambientes salinos Résistance aux environnements salins Durability in saline environment Resistenza in ambienti salini	EN ISO 112-017:92 ISO 9227:90	Sin cambios en la superficie (max.nivel) Aucun changement en surface (niveau max.) Whitout changes in surface (max. level) Senza cambi in superficie (nivele mass)
Actividad antimicrobiana / Activité antibacterienne Antimicrobial activity / Attività antimicrobica	ASTM 2180-01	Inhibe la proliferación de bacterias Pas de prolifération de bactérie Microorganism growth inhibition Impedisce la proliferazione dei batteri
Material reciclado / Matériaux recyclés Recycled material / Materiali riciclati	-	2% Pre-consumer
Imprimible / Imprimable Printable / Stampabile	-	Sí / Oui Yes / Si

## THERMAL FACTORS

## OPTICAL FACTORS

Ref.	Colors	EN 52022-1 (Standard C and D)						EN410 - EN14500 - EN14501								
		% Ts	% Rs	% As	G <sub>TOT</sub> int Glazing C		G <sub>TOT</sub> int Glazing D		% Tv	% Rv	% Tv,n-n	% Tv, n-diff	Glare Control Class	Night Privacy Class	Visual Contact Class	Daylight Utilisation Class
					G <sub>TOT</sub>	CLASS	G <sub>TOT</sub>	CLASS								
19958	Cinder	15	42	43	0,39	1	0,25	2	10	45	5	5	1	2	2	1
19980	Ebony	5	4	91	0,56	0	0,31	2	5	4	5	0,3	1	2	2	1
19904	Ebony Bronze	5	6	89	0,49	1	0,28	2	5	6	4	0,3	3	2	2	1
19900	Ebony Chocolate	5	8	87	0,49	1	0,28	2	5	7	4	0,3	3	2	2	1
19955	Ebony Grey	5	8	87	0,49	1	0,28	2	5	9	5	0,5	3	2	2	1
19959	Pebble	11	33	56	0,46	1	0,28	2	8	35	5	3	1	1	3	1
19850	Slate	5	13	82	0,47	1	0,27	2	5	14	5	0,5	3	2	2	1
19902	White	19	69	12	0,35	1	0,25	2	16	79	4	12	0	2	1	2
19921	White Grey	12	41	47	0,40	1	0,25	2	10	47	6	4	1	1	2	1
19920	White Linen	20	63	17	0,37	1	0,25	2	16	72	4	12	0	2	1	2
19927	White Pearl	17	57	26	0,39	1	0,26	2	13	65	4	9	0	2	1	2

The technical data above are average values with a +/- 5% tolerance. The values quoted above represent results of standards and internal tests performed and are provided for information only to enable to make the best use of our products. To ensure warranty effectiveness, refer to warranty certificate concerned available on demand. Our products are subjects to technical evolutions, we remain entitled to modify the characteristics of our products at any time. The buyer of our products is responsible for checking the validity of the above data.